

# Locking Devices

Design-Tec® Lockers have several locking mechanisms available to fit the needs of your facility. The following locking mechanisms are most commonly used on Design-Tec® Lockers, however countless custom lock options are available upon request.

- Hasp for Padlock
- Stealth® Lock
- Real® Combination and Lock
- Masterlock® / Built-In Combination
- Kenstan® Key Lock
- Medeco® (High Security) Lock
- Digilock® Lock
- Melo Electronic Lock – Keypad Version
- Melo Electronic Lock – 1 Button Version
- Safe-O-Mat® 800 Coin or Token Return Lock
- Safe-O-Mat® 800 Coin or Token Collect Lock
- Safe-O-Mat® 500 Card Operated Lock
- Safe-O-Pin® Pin Code Lock – Slim
- Safe-O-Tronic® access LS100 – Pin Code Lock
- RFID & NFC Locker Locking Solutions  
SAFE-O-TRONIC®  
LS200, LS300, LS400  
Dialock LockerLock™

081910

# Hasp for Padlock



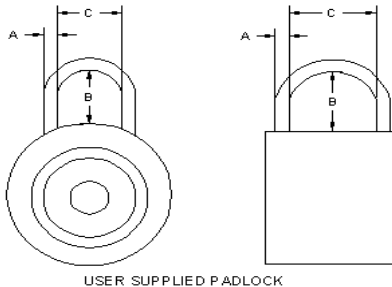
HASP HANDLE



HASP BAR

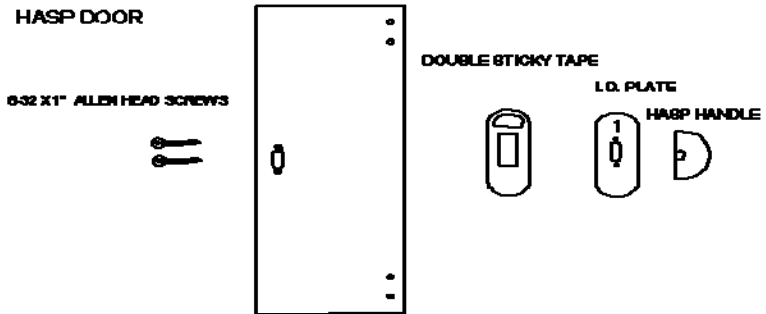
The hasp for padlock is designed for facilities that are expecting their customers to bring their own lock. It is ideal for schools, health clubs, and employee lockers. Hasps are recommended for applications where different users will be sharing the same locker. Each locker opening is equipped with a 304 grade stainless steel hasp bar attached to the locker side panel. The locker door will have an identification plate and a nylon safety handle or stainless steel hasp handle. When the door is closed, the hasp bar protrudes through the door and into the handle. The lock is then inserted through the hasp system, thus capturing the door between the lock and the locker body. There are several types of pad locks that will work with the hasp system (i.e. combination, key). See the lock shackle specification requirements below.

Permanently Assigned Users	NO
Master Keyed	N/A
Administration of Lockers Required	NO
Self Contained or Captive Keyed	N/A
Cylinder Replacement	N/A
Replacement Keys	N/A
Multiple Users	YES



USER SUPPLIED PADLOCK

Shackle Dimensions		
A	B	C
3/16" up to 5/16"	3/4" and larger	3/4" and larger



# StealthLock)))

## Radio Frequency Electronic Lock



The StealthLock is a keyless lock using radio frequency technology. The lock works with a 4 to 8 digit user or supervisor coder. StealthLock is easily programmed at the receiver latch to allow either assigned or day use function. This allows flexibility of use and permits the best use of locker space. The supervisor code allows changes to advance programming modes and to override the user code if forgotten.

### Lock Multiple Doors with a Single Keypad

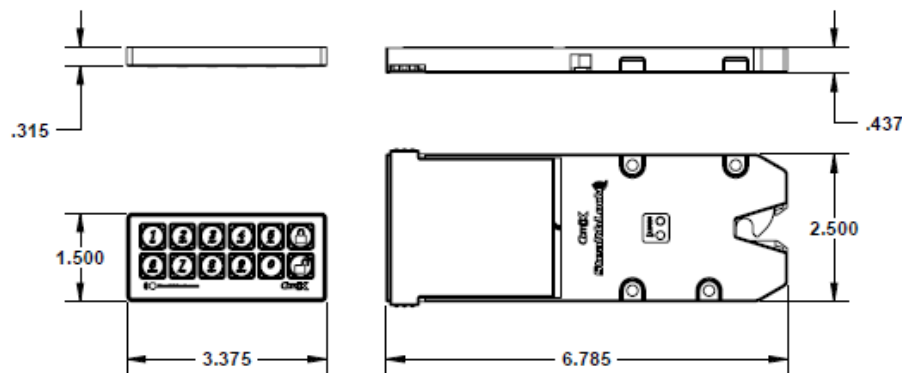
Using radio frequency technology, a single StealthLock transmitter pad can operate multiple receiver latches. This allows locking of more than one cabinet door or interior locker enclosures. The receiver latch measures less than a 1/2" and can be used on drawers using standard 1/2" slides.

### Ease of Installation Low Maintenance

StealthLock is fully surface mounted. This allows easily retrofitting existing lockers and maintenance of current locks

Easy to use keypad	Yes
Programmable user and Supervisor code	Yes
On-line programming videos	Yes
Low battery indicator	Yes
Self Lock Mode	Yes
Uses common batteries 4 AAA and 1 CR2032 Coin Battery	Yes
Battery life, 6000 cycles	Yes
Meets ANSI/BIFMA lock Pull standards	Yes

For more information go to [www.stealthlock.com](http://www.stealthlock.com)



081910



**Real Lock**

- Only mechanical lock allowing each user to set their own combination; up to 1,000 combinations.
- Locks are surface mounted onto lockers.
- Current model supports a cam latching system.
- Management key override utilizing detained disc cylinders for maximum security.
- Material: zinc alloy lock housing and brass cylinder.
- No user keys, cards or batteries; lock operation is easy and user friendly.
- Knob also acts as an integrated pull.
- Suitable for lockers, cabinets, wallet cubbies, and other storage solutions.

**Preventive Maintenance**

The operation and quality of the moving parts in the lock cylinder requires the application of a silicone spray such as WD-40. This will lubricate without leaving an oily film and retard corrosion.

Real® Lock RL-9049	
Semi-Permanent Assigned Lockers	YES
Master Keyed	YES
Administration of Locks Required	YES

For Further Information regarding Real® locks see [www.reallock.com](http://www.reallock.com)



## Series 1654 Built In Combination Lock

This lock is designed for facilities that are expecting their customers to be assigned their own locker on a semi permanent basis. It is ideal for schools, health clubs and Employee lockers, where an administered locker security system is required. These are not recommended for applications where different users will be sharing the same locker. The locks have 3 number dialing to gain access into the locker. Each lock has a separate combination and is also master keyed. After using the locker, close the door and the spring bolt automatically closes and locks the door. There are 5 preset changeable combinations available in each lock. A control chart will be sent with all of the combinations for each lock and is kept on file at Master Lock. If a combination is forgotten, the use of the Control key can open the lock or refer to the control chart for the combination.

### Control Chart

For every order, a control chart is provided. Each lock is identified by a serial number on the back of the lock. This number correlates to a series of 5 different combinations built into each lock. The use of the Control key and the button on the back of the lock rotates the combination to the next preset. The security of your entire installation is in jeopardy when unauthorized personnel have access to the Control chart and/or Control key.

### Control Keys

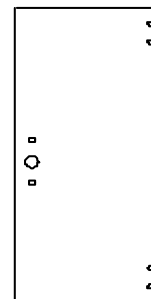
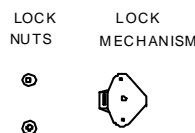
Each lock is master keyed. If a combination is lost or stolen this key will allow a facility to open the lock.

### Preventive Maintenance

The operation and quality of the moving parts in the lock cylinder requires the application of a silicone spray such as WD-40. This will lubricate without leaving an oily film and retard corrosion.

Semi-Permanently Assigned Users	YES
Master Keyed	YES
Administration of Lockers Required	YES
Self Contained Combinations	YES
Cylinder Replacement	YES
Multiple Users	YES

MASTER COMBINATION LOCK DOOR



For Further Information regarding see [www.masterlock.com](http://www.masterlock.com).

**Series K32 Spring Bolt Lock**



This lock is designed for facilities that are expecting their customers to be assigned their own locker on a semi permanent basis. It is ideal for health clubs and Employee lockers where an administered locker security system is required. These are not recommended for applications where different users will be sharing the same locker. The locks have 5 brass tumblers which will allow up to 200 different key combinations. Each lock is individually keyed and master keyed. There are 2 keys provided with each lock. After closing the door, the spring bolt automatically closes and locks the door. The polished nickel finish resists corrosion, and vandalism.

**Master Keys**

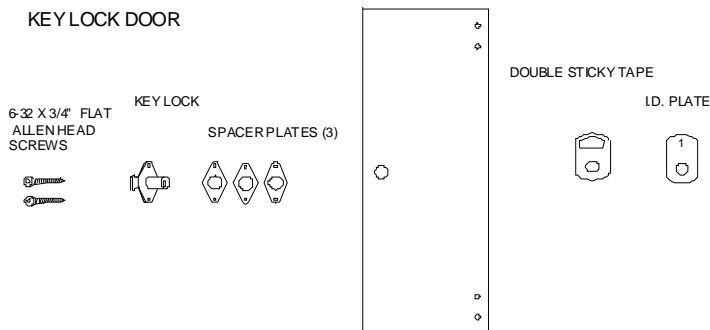
Each lock is master keyed. If a user key is lost or stolen, this key will allow a facility to open the lock. A missing user key can be copied at a local retailer or ordered from Kenstan.

**Preventive Maintenance**

The operation and quality of the moving parts in the lock cylinder requires the application of a silicone spray such as WD-40. This will lubricate without leaving an oily film and will retard corrosion.

For further information regarding KENSTAN locks see [www.kenstan.com](http://www.kenstan.com).

Semi-Permanently Assigned Users	YES
Master Keyed	YES
Administration of Lockers Required	YES
Self Contained Combinations	YES
Cylinder Replacement	YES
Multiple Users	YES





**Series M32 Spring Bolt Lock**

This lock is designed for facilities that are expecting their customers to be assigned their own locker on a semi permanent basis. It is ideal for health clubs and Employee lockers where an administered locker security system is required. These are not recommended for applications where different users will be sharing the same locker. The locks have the Medeco cylinder for high security, which is virtually pickproof. There are 5 biaxial chisel pointed pins inside each lock, which allows up to 800 different key combinations. The cores of the locks are made from hardened steel, which keeps them from being vandalized easily. Each lock is individually keyed, and master keyed. There are 2 keys provided with each lock. After closing the door, the spring bolt automatically closes and locks the door. The polished nickel finish resists corrosion and vandalism.

**Master Keys**

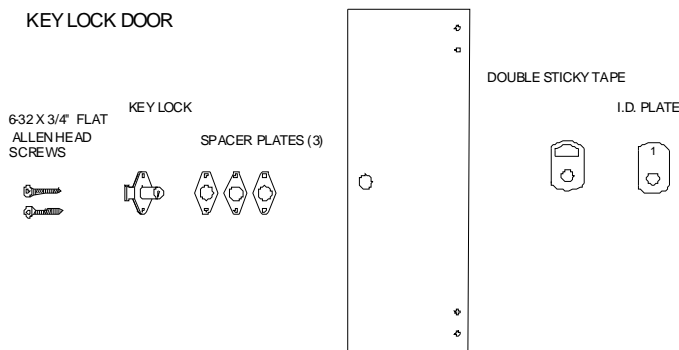
Each lock is master keyed. If a user key is lost or stolen, this key will allow a facility to open the lock. A missing user key must be purchased from Kenstan. The key blanks are not available to the public.

**Preventive Maintenance**

The operation and quality of the moving parts in the lock cylinder requires the application of a silicone spray such as WD-40. This will lubricate without leaving an oily film and will retard corrosion.

For further information regarding MEDECO locks see [www.medeco.com](http://www.medeco.com).

Semi-Permanently Assigned Users	YES
Master Keyed	YES
Administration of Lockers Required	YES
Self Contained or Captive Keys	YES
Cylinder Replacement	YES
Replacement Keys	YES
Multiple Users	Must be purchased
Security Level	High



# MELO Electronic Lock

## Keypad Version



The MELO is a modular electronic lock system designed for use in health clubs, spas, recreation centers, and high school, collegiate, and professional sport facilities. It's modular design allows it to be specified with either a slam-lock or deadbolt rear module. The product design eliminates lockers being jammed when overloading the locker exerts excess pressure on the bolt. Users access their locker via a four-digit user code. Management can gain access to the locker by using either a six-digit master code or a pass-key. The user-friendly ADA handle option eliminates the need for a special key that the user needs to grasp and that can be lost, damaged, or misplaced.

## Master Code/Override Controls

The 6-digit master code and override keys are issued to the facility management team. The master code can easily be changed if it becomes compromised. The override key can be used to open the locker in case of power failure.



## ADA Handle

MELO is ADA compliant. Certain lockers in a facility are equipped with the easy to operate handle that requires no grasping. The handle can be easily retrofitted to lockers in an existing installation.

Easy to use digital keypad	YES
4-digit programmable user code	YES
6-digit master code	YES
Unit can be switched from single-use to multi-use mode	YES
Override key feature (2,000 key codes available)	YES
Management can open with either master code or override key	YES
Battery life of 30,000+ operating cycles	YES
Visual / audio indicators	YES
Lock face is impervious to high pressure sprays (IP65 rated)	YES
Operates with four premium AA batteries	YES

081910



**Electronic Lock**

This lock provides keyless locks for assigned use lockers. Users access their locker with a four-digit programmable user code while management has access with a manager bypass key. This lock is equipped with a 1/2" dead latch to guard against break-ins.

**Manager Bypass Key**

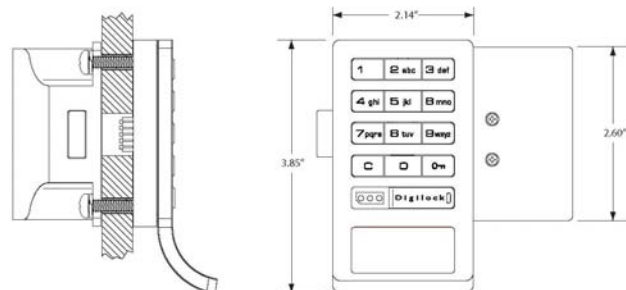
The manager bypass key is issued for management. Just a touch of this key to the key slot provides lock access and will also provide external power to the lock in case of battery failure. (Anticipated battery life is 3-5 years depending on model and usage). Programming key registers up to 25 manager bypass keys to each lock.

**ADA User Key**

Digilock is ADA compliant. Users with disabilities are issued an ADA User Key that replaces the code and allows access to any available locker without having to twist a key.

Intuitive digital keypad	YES
Four-digit programmable user code	YES
Unlock indicators	YES
1/2" Deadbolt	YES
Electronic bypass key (up to 25 per lock)	YES
Tamper guard	YES
Operates with four premium AA batteries	YES
Low battery indicator	YES

For Further Information regarding Digilock ® see [www.digilock.com](http://www.digilock.com).



# MELO Electronic Lock



## I Button Version

The MELO is a modular electronic lock system designed for use in health clubs, spas, recreation centers, and high school / collegiate / professional sport facilities. Its modular design allows it to be specified with either a slam-lock or deadbolt rear module. The I-Button MELO can be programmed to accept up to 50 users, each with their own access code. Users can easily be added or subtracted from the lock. In the day use mode, the I-Button can be programmed for a certain number of uses. The I-Button can also be programmed to work with multiple locks.

## Master I-Button / Override Keys

A master I-Button and override key are available and can be issued to the facility management team. The master I-button and override key can be used if the user loses their I-Button access key. The override key can also be used to open the locker in case of power failure.



## ADA Handle

MELO is ADA compliant. Certain lockers in a facility are equipped with the easy to operate handle that requires no grasping. The handle can be easily retrofitted to lockers in an existing installation.

Available in slamlock and deadbolt versions	YES
Lock can accommodate up to 50 users with individual codes	YES
Users can easily be added or subtracted	YES
Unit is available in both single-use and multi-use versions	YES
Override key feature (2,000 key codes available)	YES
Management can open with either a master I-Button or override key	YES
Battery life of 30,000+ operating cycles	YES
Visual / audio indicators	YES
Lock face is impervious to high pressure sprays (IP65 rated)	YES
Operates with four premium AA batteries	YES

081910

# SAFE-O-MAT®

## **SAFE-O-MAT® 800 Coin Return Lock**



This lock is designed for facilities that are expecting their customers to utilize their own coin or a facility supplied token that will be returned to the customer after use of the lock. The locker is not assigned to any one person. To identify an unlocked locker, the key will be protruding from the door. The lock is unlocked when the user first approaches the locker. The will open the door and store their clothes, purses, etc. On the back side of coin mechanism is on the back side of the door. The user inserts their coin or token into the lock and closes the door, turns the key to the left *and removes the key*. *The locker is now locked and the coin or token is temporarily captive in the lock*. When returning to the locker, the user inserts the key into the lock and turns it to the right. This unlocks the door, captures the key, and returns the quarter or token to the user via the return cup on the back of the coin mechanism. Each lock is supplied with one user key. Each project includes a cylinder change key and a master key. Coin or token type must be specified when ordering this lock type. Tokens will need to be purchased for token locks.

### **Master Keys**

Each project lock is master keyed. If a user key is lost or stolen, this key will allow the facility to open the lock.

### **Cylinder Removal Keys**

If a key is lost or stolen, this key will allow the facility to remove the lock cylinder for re-keying.

### **Replacement Keys and Additional Cylinders**

We recommend that a stock of replacement cylinders be included in the initial purchase of locks. This allows the facility to immediately replace a cylinder when a key is lost, maintaining 100% locker utilization. Replacement keys can be purchased using the key and series number printed on the side of each removed cylinder.

### **Preventive Maintenance**

The operation and quality of the moving parts in the lock cylinder requires the application of a silicone spray such as WD-40. This will lubricate without leaving an oily film and will retard corrosion.

For more information on the Safe-O-Mat® 800 Coin Return Lock go to [www.hafele.com](http://www.hafele.com).

Permanent Assigned Lockers	NO
Day Use Function	YES
Master Keyed	YES
Coin Operation	YES
Self Contained Keys	YES
Cylinder Replacement	YES

081910

# SAFE-O-MAT®



## **SAFE-O-MAT® 800 Coin or Token Collect Lock**

This lock is designed for facilities that are expecting their customers to utilize their own quarter or facility supplied token that will be kept by the facility after use of the lock. The locker is not assigned to any one person. To identify an unlocked locker, the key will be protruding from the door. The lock is unlocked when the user first approaches the locker. They open the door and store their clothes, purses, etc. The coin mechanism is on the back side of the door. The user inserts their coin(s) or token into the lock and closes the door, turns the key to the left *and removes the key. The locker is now locked and the coin or token is temporarily captive in the lock.* When returning to the locker, the user inserts the key into the lock and turns it to the right. This unlocks the door, captures the key, and retains the coin or token into the collect box. Each lock is supplied with one user key. Each project includes a cylinder change key, a master key and two coin box keys. The facility will need to open the collect box for removal of the coins or tokens. Coin or token type must be specified when ordering this lock type. Tokens will need to be purchased for token locks.

### **Master Keys**

Each project lock is master keyed. If a user key is lost or stolen, this key will allow the facility to open the lock.

### **Cylinder Removal Keys**

If a key is lost or stolen, this key will allow the facility to remove the lock cylinder for re-keying.

### **Replacement Keys and Additional Cylinders**

We recommend that a stock of replacement cylinders be included in the initial purchase of locks. This allows the facility to immediately replace a cylinder when a key is lost, maintaining 100% locker utilization. Replacement keys can be purchased using the key and series number printed on the side of each removed cylinder.

### **Preventive Maintenance**

The operation and quality of the moving parts in the lock cylinder requires the application of a silicone spray such as WD-40. This will lubricate without leaving an oily film and will retard corrosion.

For more information on the Safe-O-Mat® 800 Coin or Token Collect Lock go to [www.hafele.com](http://www.hafele.com).

Permanent Assigned Lockers	NO
Day Use Function	YES
Master Keyed	YES
Coin Operation	YES
Self Contained Keys	YES
Cylinder replacement	YES
Facility Revenue	YES

081910

# SAFE-O-MAT®



## **SAFE-O-MAT® 500 Card Operated Lock**

This lock is designed for facilities that desire to utilize a club membership card. The locker is not assigned to any one person. Any membership card that has a hole punched in it can operate any of the locks. To identify an available, unlocked locker, the key will be protruding from the door. The lock is unlocked when the user first approaches the locker. They open the door and store their clothes, purses, etc. The card lock is on the back side of the door. The user inserts their card into the lock, closes the door, turns the key to the left, and removes the key. The locker is now locked. When returning to the locker, the user will insert the key into the lock and turn the key to the right. This will unlock the door, capture the mechanical key, and release the card for the user. Each lock is supplied with one user key. The project set also includes a cylinder change key and a master key. The additional purchase of a cardpunch is required. Any card, the standard size of a credit card can be used for this lock. The card punch is used to create a hole in the facility's membership card. Blank or pre-punched cards can also be purchased.

### **Master Keys**

Each project lock is master keyed. If a user key is lost or stolen, this key will allow the facility to open the lock.

### **Cylinder Removal Keys**

If a key is lost or stolen, this key will allow the facility to remove the lock cylinder for re-keying.

### **Replacement Keys and Additional Cylinders**

We recommend that a stock of replacement cylinders be included in the initial purchase of locks. This allows the facility to immediately replace a cylinder when a key is lost, maintaining 100% locker utilization. Replacement keys can be purchased using the key and series number printed on the side of each removed cylinder.

### **Preventive Maintenance**

The operation and quality of the moving parts in the lock cylinder requires the application of a silicone spray such as WD-40. This will lubricate without leaving an oily film and will retard corrosion.

For more information on the Safe-O-Mat® 500 Card Operated Lock go to [www.hafele.com](http://www.hafele.com).

Permanent Assigned Lockers	NO
Day Use Function	YES
Master Keyed	YES
Coin Operation	NO
Self Contained Keys	YES
Cylinder replacement	YES
Card Retrieval	NO

081910

# SAFE-O-MAT®



## **SAFE-O-PIN® Pin Code Lock – Slim**

This lock is designed for facilities that prefer a no key solution. To identify an unlocked locker, the handle has an upright green bar. The lock is unlocked when the user first approaches the locker. They open the door and store their clothes, purses, etc. The locks can be used as fixed code – assigned or shared users or day use – free for any user. For fixed code applications, the user enters the code and turns the handle. This locks the lock and indicates the locker is in use. For day use applications, the user enters their code and turns the handle. To open the locks, the user enters the fixed or personal code. The lock handle springs to the unlocked position. A managers' code is available to access lockers where the codes have been forgotten. The locks can be switched by the manager from day use to fixed code, making management of locker types and locations easily changed to match varying and evolving needs of facilities.

### **Master Code – Management access**

Each project lock coded by the owner with a unique and secure code, which allows the facility to keep all lockers in use.

### **Preventive Maintenance**

The operation and quality of the moving parts in the lock cylinder requires the application of a silicone spray such as WD-40. This will lubricate without leaving an oily film and will retard corrosion.

For more information on the Safe-O-Pin® Pin Code Lock - Slim go to [www.hafele.com](http://www.hafele.com).

Permanent Assigned Lockers	Facility Option
Day Use Function	YES
Master Code	YES
Coin Operation	NO

081910

# SAFE-O-MAT®



## **SAFE-O-TRONIC® access LS100 – Pin Code Lock**

This narrow lock style is designed for facilities that prefer a no key solution. To identify an unlocked locker, the handle has an upright green bar. The lock is unlocked when the user first approaches the locker. They open the door and store their clothes, purses, etc. The locks operate in day use function - free for any user. The user enters their code and turns the handle. To open the locks, the user reenters the personal code. The lock handle springs to the unlocked position. A managers' code is available to access lockers where the codes have been forgotten. The locks can be switched by the manager from day use to fixed code, making management of locker types and locations easily changed to match varying and evolving needs of facilities. Operation of the handle and input of numbers comply with ADA requirements for door access – no grasping or turning actions by the user.

### **Master Code – Management access**

Each project lock coded by the owner with a unique and secure code, which allows the facility to keep all lockers in use.

### **Preventive Maintenance**

The operation and quality of the moving parts in the lock cylinder requires the application of a silicone spray such as WD-40. This will lubricate without leaving an oily film and will retard corrosion.

For more information on the Safe-O-Tronic® access LS100 – Pin Code Lock go to [www.hafele.com](http://www.hafele.com).

Permanent Assigned Lockers	Facility Option
Day Use Function	YES
Master Code	YES
Coin Operation	NO

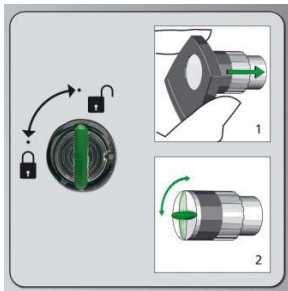
081910

# SAFE-O-MAT®

## RFID Locker Locking Solutions

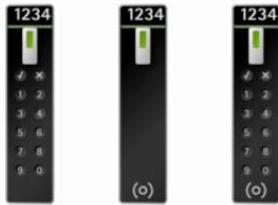
Technological advances in data storage and transmission, notably with RFID credentials, combined with programming and communication devices is providing advanced solutions for access control and security. This can be applied to stand alone locker solutions or join lockers into a comprehensive facility solution. For example, students can have storage freedom in any available locker, equipment or instrument storage locker, leave an audit trail with every use and have their rights expire ten days after the semester ends. Only current hotel guests can use any available locker. Membership cards or wristbands can also be used to lock any locker. Spec Rite Designs has development and technical planning support to review your client's requirements and to recommend solutions using an array of RFID and other digital solutions.

## SAFE-O-TRONIC®



This lock style is designed for facilities Using RFID tags with Phillips Mifare technology. To identify an unlocked locker, the handle has an upright green bar. The lock is unlocked when the user first approaches the locker. They open the door and store their clothes, purses, etc. The locks can be used as assigned or shared users or day use – free for any user. For fixed key applications, the users cards are added to the locks memory of authorized leys. For day use applications, the any user's key can lock then unlock the locker. The user pressing the handle with their key, then turns the handle. This locks the lock and indicates the locker is in use. To open the locks, the user presses the handle with the key. The lock handle springs to the unlocked position.

## LS200, LS300, LS400 RFID and NFC



Advanced versions of the SAFE-O-TRONIC® access LS100 expand functional solutions by adding programming options with RFID tags, access with RFID or NFC credentials.

## Diallock LockerLock™



This lock style is designed for facilities using RFID tags with TI Tag-It high frequency technology. Advanced programming options include assigned and day-use functions, audit trails and expiration dates. Flexible programming or interfaces with third party solutions are available, for example with fitness software programs.

Software is available to provide one day, three day and one week keys for access to any available locker at a facility, for example water parks and amusement parks.

## RFID – Radio Frequency Identification

Highly secure data and transmission technology which include a unique manufacturer's code, as well as read/write capacity, utilized to grant access without enrolling each authorized key at each locker.

## NFC – Near Field Communications

NFC is emerging telephone data communications that allows access codes to be transmitted to phones with NFC capability. For example, send access rights to a locker from a remote location to a renter.

081910